



# MANAGE YOUR ORGANIZATION'S SECURITY RISK

**S2**ORG gives you a baseline understanding of where your organization's security weaknesses are. It allows you to build a roadmap and track the improvements made to the security of your organization.

- Measure your organization's risk
- Expose information security vulnerabilities
- Roadmap changes for improvement
- Track improvement score
- Based on standards such as NIST, HIPAA, ISO



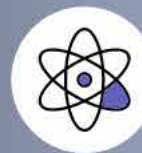
## ADMINISTRATIVE

The people part of information security, administrative controls are mainly procedures and policies that guide employee actions.



## INTERNAL TECHNICAL

Internal technical controls segment your network from the inside, ensuring that if someone did get in they wouldn't be able to get far.



## PHYSICAL

Physical controls are the means and devices to control physical access to sensitive information and protect the availability of the information.



## EXTERNAL TECHNICAL

These controls protect your organization from the outside world. These are what people traditionally think of as cyber security.